

Ekonomska skola Vukovar

Date: 14.09.2020
Operator: Nova-lux d.o.o.

Ekonomska skola Vukovar

Table of contents



Operator Nova-lux d.o.o.
Telephone
Fax e-
Mail

Project Cover	1
Table of contents	2
Sportska dvorana_svlačionice	
Summary	4
Luminaire parts list	5
Sportska dvorana_praonica i wc	
Summary	6
Luminaire parts list	7
Sportska dvorana_ulazni prostor_D01	
Summary	8
Luminaire parts list	9
Sportska dvorana_hodnik_D21	
Summary	10
Luminaire parts list	11
Sportska dvorana_hodnik_D03	
Summary	12
Luminaire parts list	13
Sportska dvorana_spremište sprava i opreme_D26	
Summary	14
Luminaire parts list	15
Škola_1kat_spremište opreme_D104	
Summary	16
Luminaire parts list	17
Škola_1kat_kabinet nastavnika_D105	
Summary	18
Luminaire parts list	19
Calculation surfaces (results overview)	20
Škola_1kat_servisni prostor (el)_D109	
Summary	21
Luminaire parts list	22
Škola_1kat_hodnik_D101	





Operator Nova-lux d.o.o.
 Telephone
 Fax e-
 Mail

Summary	23
Luminaire parts list	24
Škola_1kat_sanitarije_D110	
Summary	25
Luminaire parts list	26
Škola_1kat_kabinet hrvatski j_K101	
Summary	27
Luminaire parts list	28
Calculation surfaces (results overview)	29
Škola_1kat_učionica	
Summary	30
Luminaire parts list	31
Calculation surfaces (results overview)	32
Škola_1kat_učenički klub_L128	
Summary	33
Luminaire parts list	34
Škola_1kat_knjižnica_Multim_prostor_K114	
Summary	35
Luminaire parts list	36
Calculation surfaces (results overview)	37
Škola_1kat_knjižnica_Prostor za knjiznu gradju_K116	
Summary	38

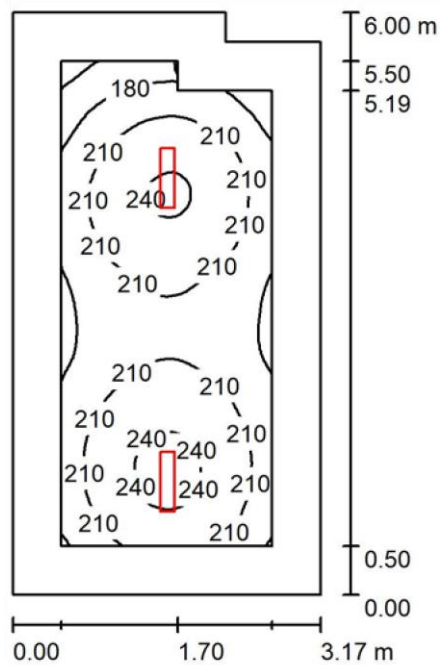
Table of contents

Luminaire parts list	39
Škola_1kat_hodnik_K136	
Summary	40
Luminaire parts list	41
Škola_2kat_kabinet bio/kem_K220	
Summary	42
Luminaire parts list	43
Calculation surfaces (results overview)	44

Operator Nova-lux d.o.o.
 Telephone
 Fax e-
 Mail

Summary

Sportska dvorana_svlačionice



Height of Room: 4.200 m, Mounting Height: 3.200 m, Light loss factor: 0.80 Values in Lux, Scale 1:78

Surface	ρ [%]	E_{av} [lx]	E_{min} [lx]	E_{max} [lx]
Workplane	/	209	137	248
	0.655			
Floor	20	146	91	175
	0.624			
Ceiling	70	44	29	51
	0.665			
Walls (6)	50	98	30	238 /

Workplane:

Height: 0.800 m
 Grid: 32 x 64 Points
 Boundary Zone: 0.500 m

Operator Nova-lux d.o.o.
 Telephone
 Fax e-
 Mail

Luminaire parts list

Illuminance Quotient (according to LG7): Walls / Working Plane: 0.483, Ceiling / Working Plane: 0.212.

Luminaire Parts List

No.	Pieces	Designation (Correction Factor)	□ (Luminaire) [lm]	□ (Lamps) [lm]
-----	--------	---------------------------------	--------------------	----------------

1	2	LED,industrial,body PC with aluminium cooler,diffuser translucent PC (1.000)	3918	
3920	30.0			
			Total: 7837	Total: 7840
			60.0	

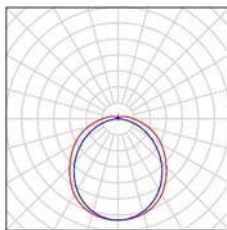
Specific connected load: $3.20 \text{ W/m}^2 = 1.53 \text{ W/m}^2/100 \text{ lx}$ (Ground area: 18.75 m^2)

Sportska dvorana_svlačionice /

2 Pieces

LED,industrial,body PC with aluminium cooler,diffuser translucent PC Article No.:
 Luminous flux (Luminaire): 3918 lm
 Luminous flux (Lamps): 3920 lm
 Luminaire Wattage: 30.0 W
 Luminaire classification according to CIE: 94
 CIE flux code: 45 74 92 94 100
 Fitting (Correction Factor 1.000).

See our luminaire catalog for image of the luminaire.

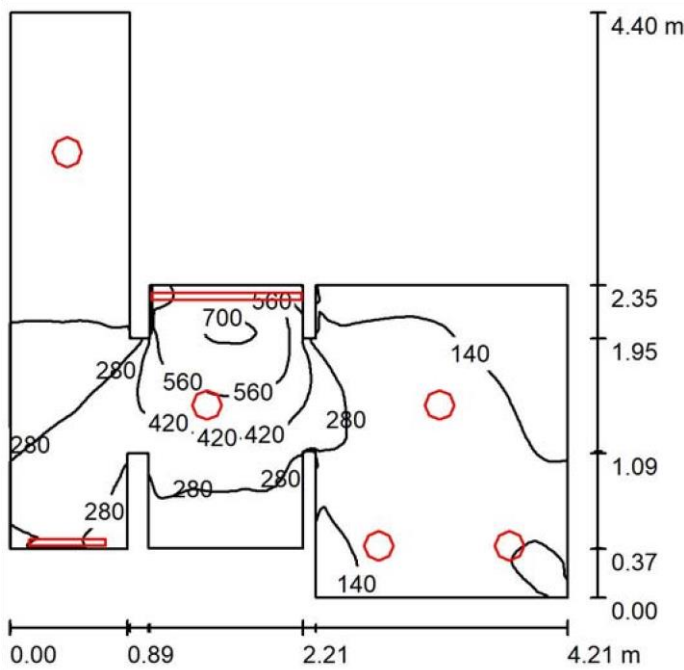


an

Operator Nova-lux d.o.o.
Telephone
Fax e-Mail

Summary

Sportska dvorana_praonica i wc /



Height of Room: 4.200 m, Light loss factor: 0.80

Surface	ρ [%]	E _{av} [lx]	E _{min} [lx]	E _{max} [lx]	u0
Workplane	/	224	55	723	0.245
Floor	20	155	45	315	0.292
Ceiling 70 117 48 304 0.410 Walls (20) 55 155 22 5685 /					

Workplane:
Height: 0.800 m
Grid: 128 x 128 Points
Boundary Zone: 0.000 m
Illuminance Quotient (according to LG7): Walls / Working Plane: 0.767, Ceiling / Working Plane: 0.523.

Luminaire Parts List

No.	Pieces	Designation (Correction Factor)	□ (Luminaire) [lm]	□ (Lamps) [lm]	P [W]
1	5	LED 1200LM (1.000)	1138	1667	13.2
2	1	1032 1420 9.0 1300LM			
3	1	3375 4644 28.0			

Operator Nova-lux d.o.o.
Telephone
Fax e-Mail

Luminaire pa

LED 4400LM

Total: 10095

Total: 14399 103.0

Specific connected load: $9.72 \text{ W/m}^2 = 4.34 \text{ W/m}^2/100 \text{ lx}$ (Ground area: 10.59 m^2)

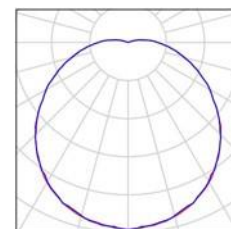
Sportska dvorana_praonica i wc /

5 Pieces

[Redacted]
[Redacted]

See our luminaire catalog
for an image of the
luminaire.

Article No.: [Redacted]
Luminous flux (Luminaire): 1138 lm
Luminous flux (Lamps): 1667 lm
Luminaire Wattage: 13.2 W
Luminaire classification according to CIE: 96
CIE flux code: 41 70 89 96 68 Fitting: 1 x LED (Correction Factor 1.000).

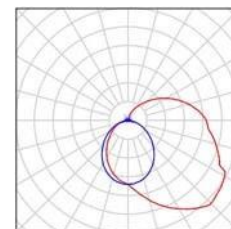


1 Pieces

[Redacted]
[Redacted]
[Redacted] luminaire.

See our luminaire catalog
for an image of the Article No.: X-

Luminous flux (Luminaire): 1032 lm
Luminous flux (Lamps): 1420 lm
Luminaire Wattage: 9.0 W
Luminaire classification according to CIE: 79
CIE flux code: 36 65 86 79 73
Fitting: [Redacted] (Correction Factor 1.000).

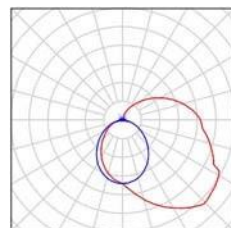


1 Pieces

[Redacted]
[Redacted]

See our luminaire catalog
for an image of the
luminaire.

Article No.: [Redacted]
Luminous flux (Luminaire): 3375 lm
Luminous flux (Lamps): 4644 lm
Luminaire Wattage: 28.0 W
Luminaire classification according to CIE: 79
CIE flux code: 36 65 86 79 73 Fitting: 2 [Redacted]
[Redacted] (Correction Factor 1.000).



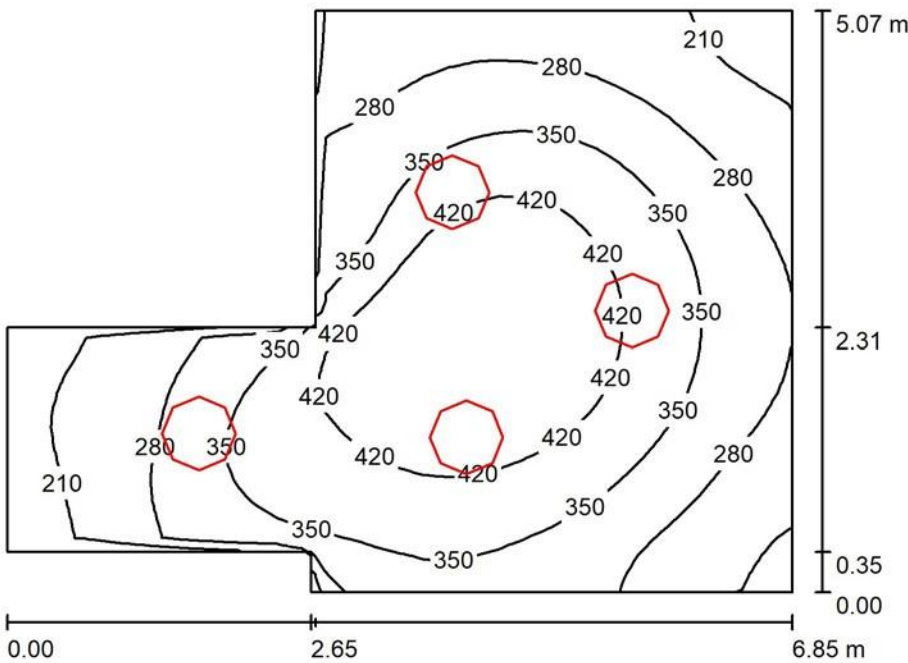


Operator Nova-lux d.o.o.
Telephone
Fax e-
Mail

Summary

Sportska dvorana_ulazni prostor_D01

/



Height of Room: 4.200 m, Mounting Height: 3.500 m, Light loss factor: 0.80

Values in Lux, Scale 1:60

Surface	ρ [%]	E _{av} [lx]	E _{min} [lx]	E _{max} [lx]	u ₀
Workplane	/	332	174	485	0.524
Floor	20	332	174	485	0.524
Ceiling	70	52	34	67	0.662
Walls (8)	30	185	34	705	

Workplane:

Height: 0.000 m
Grid: 32 x 32 Points
Boundary Zone: 0.000 m

Illuminance Quotient (according to LG7): Walls / Working Plane: 0.552, Ceiling / Working Plane: 0.155.

Luminaire Parts List

No.	Pieces	Designation (Correction Factor)	ϕ (Luminaire) [lm]	ϕ (Lamps) [lm]	P [W]
1	4	<div></div> (1.000)	6387	8058	65.0

Operator Nova-lux d.o.o.
Telephone
Fax e-
Mail

Luminaire parts list




Total: 25550 Total: 32232 260.0

Specific connected load: $9.86 \text{ W/m}^2 = 2.97 \text{ W/m}^2/100 \text{ lx}$ (Ground area: 26.38 m^2)

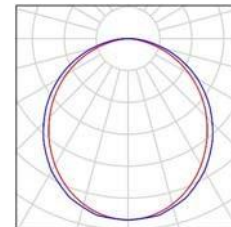
Sportska dvorana_ulazni prostor_D01 /

4 Pieces



Article No.: 
Luminous flux (Luminaire): 6387 lm
Luminous flux (Lamps): 8058 lm
Luminaire Wattage: 65.0 W
Luminaire classification according to CIE: 100
CIE flux code: 47 79 95 100 79 Fitting: 
 (Correction Factor 1.000).

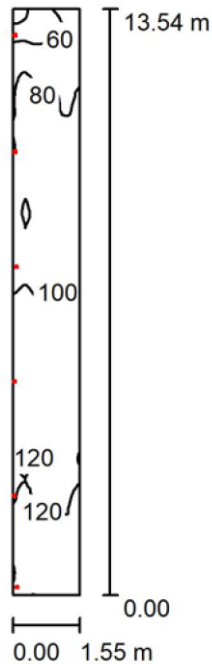
See our luminaire catalog
for an image of the
luminaire.



Operator Nova-lux d.o.o.
 Telephone
 Fax e-
 Mail

Summary

Sportska dvorana_hodnik_D21 /



Height of Room: 4.200 m, Light loss factor: 0.80

Values in Lux, Scale 1:175

Surface	ρ [%]	E_{av} [lx]	E_{min} [lx]	E_{max} [lx]	U0
Workplane	/	100	54	140	0.534
Floor	20	100	53	139	0.532
Ceiling	70	106	57	159	0.540
Walls (4)	50	220	31	19489	

Workplane:

Height: 0.000 m
 Grid: 16 x 128 Points
 Boundary Zone: 0.000 m

Illuminance Quotient (according to LG7): Walls / Working Plane: 2.200, Ceiling / Working Plane: 1.060.

Luminaire Parts List

No.	Pieces	Designation (Correction Factor)	Φ (Luminaire) [lm]	Φ (Lamps) [lm]	P [W]
1	6		3375	4644	28.0



Operator Nova-lux d.o.o.
Telephone
Fax e-
Mail

Luminaire parts list

Total: 20248 Total: 27864 168.0

Specific connected load: $7.99 \text{ W/m}^2 = 7.97 \text{ W/m}^2/100 \text{ lx}$ (Ground area: 21.04 m^2)

Sportska dvorana_hodnik_D21 /

6 Pieces

See our luminaire catalog
for an image of the Article No.: X-
luminaire.

Luminous flux (Luminaire): 3375 lm

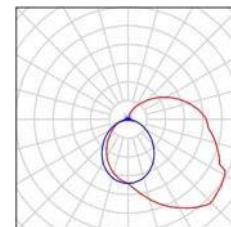
Luminous flux (Lamps): 4644 lm

Luminaire Wattage: 28.0 W

Luminaire classification according to CIE: 79

CIE flux code: 36 65 86 79 73

Fitting: 2 (Correction Factor 1.000).

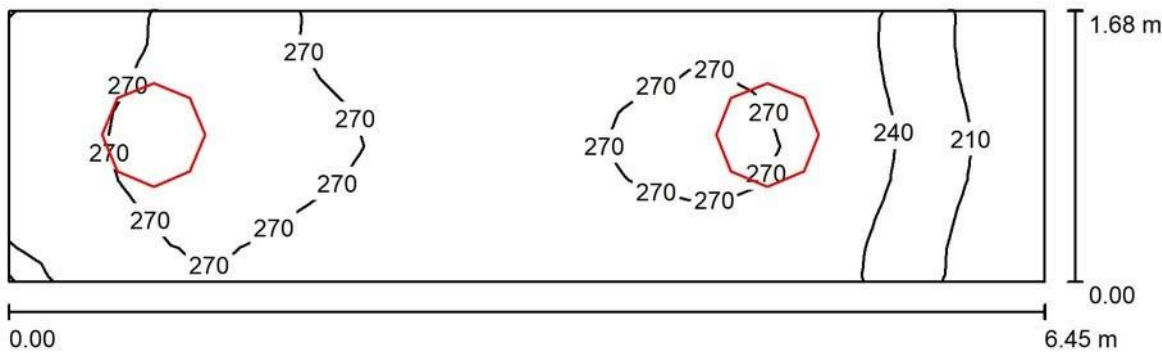




Operator Nova-lux d.o.o.
Telephone
Fax e-
Mail

Summary

Sportska dvorana_hodnik_D03 /



Height of Room: 4.200 m, Mounting Height: 3.500 m, Light loss factor: 0.80

Values in Lux, Scale 1:47

Surface	ρ [%]	E _{av} [lx]	E _{min} [lx]	E _{max} [lx]	U ₀
Workplane	/	256	186	287	0.729
Floor	20	256	182	287	0.711
Ceiling	70	92	60	119	0.651
Walls (4)	50	224	59	1045	

Workplane:

Height: 0.000 m
Grid: 32 x 8 Points
Boundary Zone: 0.000 m

Illuminance Quotient (according to LG7): Walls / Working Plane: 0.871, Ceiling / Working Plane: 0.360.

Luminaire Parts List

No.	Pieces	Designation (Correction Factor)	ϕ (Luminaire) [lm]	ϕ (Lamps) [lm]	P [W]
1	2	[REDACTED] 90MM (1.000)	6387	8058	65.0
Total: 12775			Total: 16116		130.0

Specific connected load: 12.00 W/m² = 4.69 W/m²/100 lx (Ground area: 10.84 m²)



Operator Nova-lux d.o.o.
Telephone
Fax e-
Mail

Luminaire parts list

Sportska dvorana_hodnik_D03 /

2 Pieces



See our luminaire catalog
for an image of the
luminaire.

Article No.:

Luminous flux (Luminaire): 6387 lm

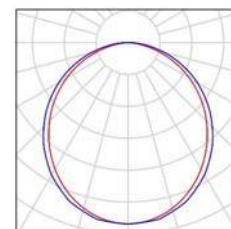
Luminous flux (Lamps): 8058 lm

Luminaire Wattage: 65.0 W

Luminaire classification according to CIE: 100

CIE flux code: 47 79 95 100 79 Fitting:

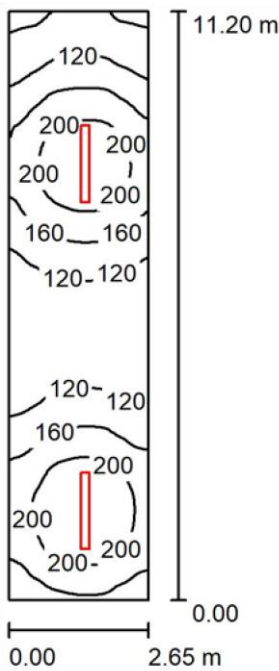
(Correction Factor 1.000).



Operator Nova-lux d.o.o.
Telephone
Fax e-
Mail

Summary

Sportska dvorana_spremište sprava i opreme_D26
/



Height of Room: 3.750 m, Mounting Height: 3.750 m, Light loss factor: 0.80

Values in Lux, Scale 1:144

Surface	ρ [%]	E _{av} [lx]	E _{min} [lx]	E _{max} [lx]	u0
Workplane	/	153	72	238	0.470
Floor	20	126	77	167	0.613
Ceiling	70	68	29	392	0.422
Walls (4)	50	107	41	338	

Workplane:

Height: 0.800 m
Grid: 32 x 128 Points
Boundary Zone: 0.000 m

Illuminance Quotient (according to LG7): Walls / Working Plane: 0.765, Ceiling / Working Plane: 0.439.

Luminaire Parts List

No.	Pieces	Designation (Correction Factor)	□ (Luminaire) [lm]	□ (Lamps) [lm]	P [W]
-----	--------	---------------------------------	--------------------	----------------	-------

Operator Nova-lux d.o.o.
 Telephone
 Fax e-
 Mail

Luminaire parts list

1	2	LED,industrial,body PC with aluminium cooler,diffuser translucent PC (1.000)	5749	5750	44.0
Total: 11498			Total: 11500	88.0	

Specific connected load: $2.96 \text{ W/m}^2 = 1.93 \text{ W/m}^2/100 \text{ lx}$ (Ground area: 29.69 m^2)

Sportska dvorana_spremište sprava i opreme_D26 /

2 Pieces

LED,industrial,body PC with aluminium cooler,diffuser translucent PC Article No.:

Luminous flux (Luminaire): 5749 lm

Luminous flux (Lamps): 5750 lm

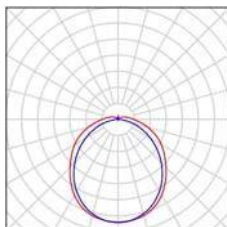
Luminaire Wattage: 44.0 W

Luminaire classification according to CIE: 94

CIE flux code: 45 74 92 94 100

Fitting: 1 (Correction Factor 1.000).

See our luminaire catalog for image of the luminaire.

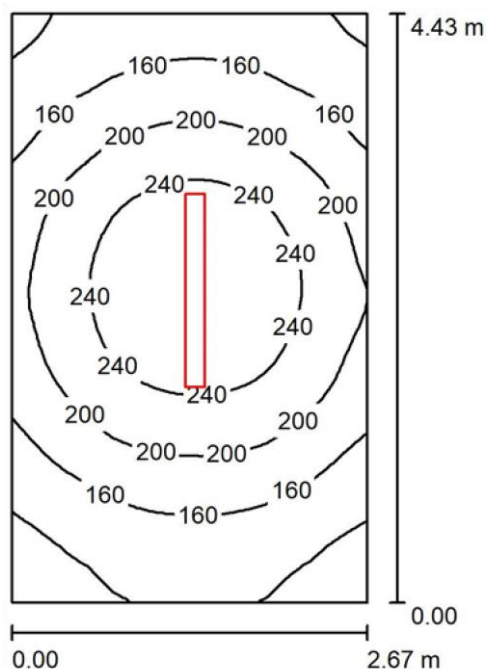


an

Operator Nova-lux d.o.o.
Telephone
Fax e-Mail

Summary

Škola_1kat_spremište opreme_D104 /



Height of Room: 3.450 m, Mounting Height: 3.450 m, Light loss factor: 0.80

Values in Lux, Scale 1:57

Surface	ρ [%]	E_{av} [lx]	E_{min} [lx]	E_{max} [lx]	$u0$
Workplane	/	189	97	276	0.514
Floor	20	145	97	184	0.668
Ceiling	70	81	39	352	0.483
Walls (4)	50	119	54	302	/

Workplane:**UGR****Lengthways-**

Across to luminaire axis

Height: 0.800 m
Grid: 32 x 32 Points
Boundary Zone: 0.000 m

Left Wall 18
Lower Wall 18
(CIE, SHR = 0.25.)

Illuminance Quotient (according to LG7): Walls / Working Plane: 0.691, Ceiling / Working Plane: 0.423.

Luminaire Parts List

No.	Pieces	Designation (Correction Factor)	Φ (Luminaire) [lm]	Φ (Lamps) [lm]	P [W]
1	1	LED, industrial, body PC with aluminium cooler, diffuser translucent PC (1.000)	5749	5750	44.0
Total: 5749			Total: 5750	44.0	

Specific connected load: $3.72 \text{ W/m}^2 = 1.97 \text{ W/m}^2/100 \text{ lx}$ (Ground area: 11.82 m^2)

Operator Nova-lux d.o.o.
Telephone
Fax e-Mail

Luminaire pa

Škola_1kat_spremište opreme_D104 /

1 Pieces

LED,industrial,body PC with aluminium cooler,diffuser translucent PC Article No.:

Luminous flux (Luminaire): 5749 lm

Luminous flux (Lamps): 5750 lm

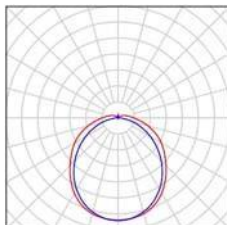
Luminaire Wattage: 44.0 W

Luminaire classification according to CIE: 94

CIE flux code: 45 74 92 94 100

Fitting: 1 x (Correction Factor 1.000).

See our luminaire catalog for image of the luminaire.

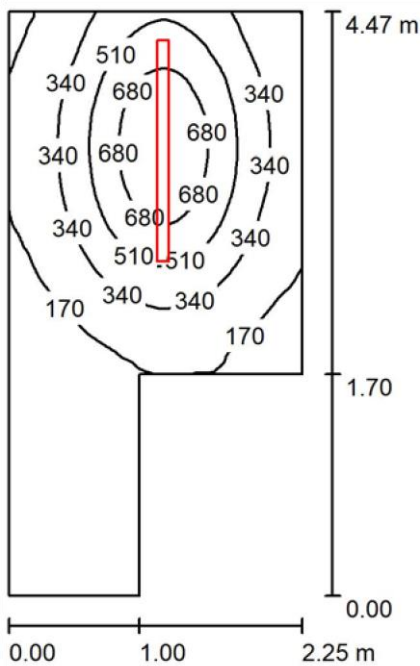


an

Operator Nova-lux d.o.o.
Telephone
Fax e-
Mail

Summary

Škola_1kat_kabinet nastavnika_D105
/



Height of Room: 2.750 m, Mounting Height: 2.000 m, Light loss factor: 0.80

Values in Lux, Scale 1:58

Surface	ρ [%]	E _{av} [lx]	E _{min} [lx]	E _{max} [lx]	u0
Workplane	/	306	12	826	0.041
Floor	20	218	16	373	0.072
Ceiling	70	36	12	51	0.321
Walls (6)	50	84	9.35	758	

Workplane:

Height: 0.800 m
Grid: 128 x 64 Points
Boundary Zone: 0.000 m

Illuminance Quotient (according to LG7): Walls / Working Plane: 0.237, Ceiling / Working Plane: 0.118.

Luminaire Parts List

No.	Pieces	Designation (Correction Factor)	□ (Luminaire) [lm]	□ (Lamps) [lm]	P [W]
-----	--------	---------------------------------	--------------------	----------------	-------

Operator Nova-lux d.o.o.
Telephone
Fax e-
Mail

Luminaire parts list

1	1	esse-ci S.r.l. 43DR36DPLL490 GROOVE DR/DPL	3780	3780	36.0
		36W 4000K CRI>90 Low Power (1.000)			
Total: 3780			Total: 3780	36.0	

Specific connected load: $4.53 \text{ W/m}^2 = 1.48 \text{ W/m}^2/100 \text{ lx}$ (Ground area: 7.95 m^2)

Škola_1kat_kabinet nastavnika_D105 /

1 Pieces

See our luminaire catalog

for an image of the Article No.:

luminaire.

Luminous flux (Luminaire): 3780 lm

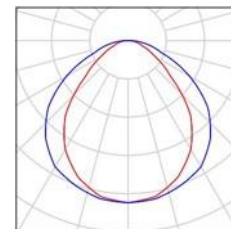
Luminous flux (Lamps): 3780 lm

Luminaire Wattage: 36.0 W

Luminaire classification according to CIE: 100

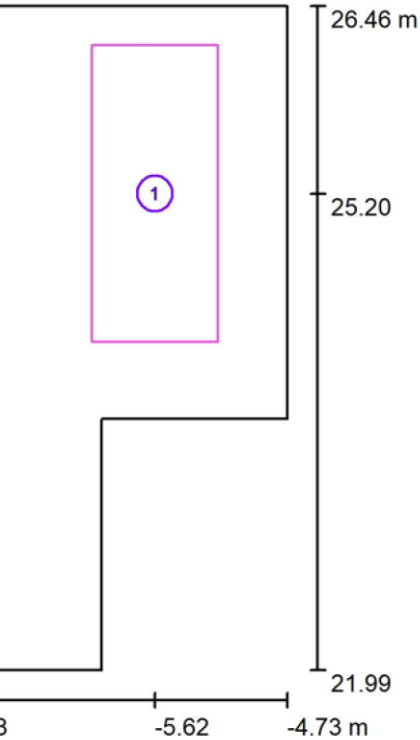
CIE flux code: 55 85 96 100 100

Fitting: 1 x (Correction Factor 1.000).



Operator Nova-lux d.o.o.
Telephone
Fax e-
Mail

Škola_1kat_kabinet nastavnika_D105 / Calculation surfaces (results overview)



Scale 1 : 51

Calculation Surface List

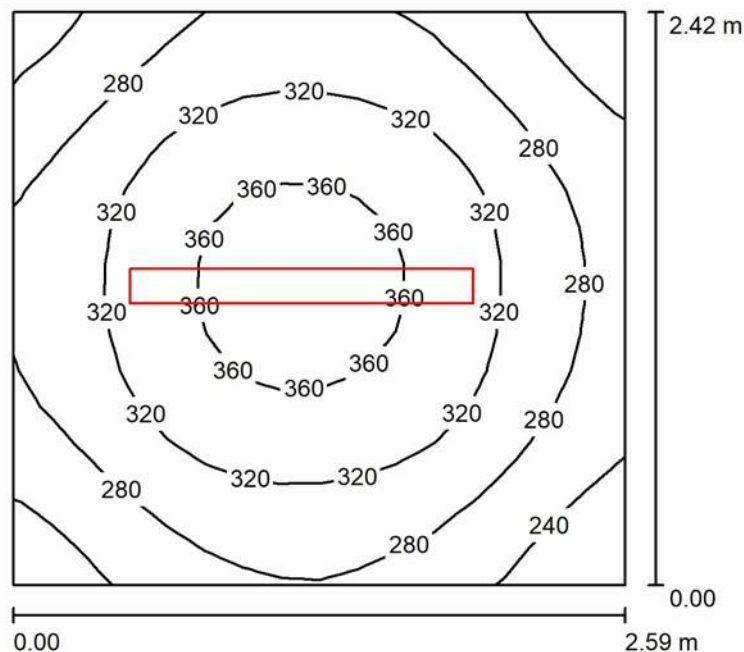
Designation	Type	Grid	E _{av} [lx]	E _{min} [lx]	E _{max} [lx]	u0	E _{min} / E _{max}
Radna ploha	perpendicular	16 x 32	573	246	774	0.430	0.318



Operator Nova-lux d.o.o.
 Telephone
 Fax e-
 Mail

Summary

Škola_1kat_servisni prostor (el)_D109 /



Height of Room: 3.400 m, Mounting Height: 3.400 m, Light loss factor: 0.80

Values in Lux, Scale 1:32

Surface	ρ [%]	E_{av} [lx]	E_{min} [lx]	E_{max} [lx]	$u0$
Workplane	/	304	203	377	0.668
Floor	20	213	169	244	0.794
Ceiling	70	151	73	534	0.480
Walls (4)	40	223	93	532	/

Workplane:

Height: 0.800 m
 Grid: 16 x 16 Points
 Boundary Zone: 0.000 m

Illuminance Quotient (according to LG7): Walls / Working Plane: 0.843, Ceiling / Working Plane: 0.493.

Luminaire Parts List

No.	Pieces	Designation (Correction Factor)	Φ (Luminaire) [lm]	Φ (Lamps) [lm]	P [W]
1	1	LED, industrial, body PC with aluminium cooler, diffuser translucent PC (1.000)	7438	7440	53.0
Total:			7438	7440	53.0

Operator Nova-lux d.o.o.
Telephone
Fax e-
Mail

Luminaire parts list

Specific connected load: $8.46 \text{ W/m}^2 = 2.78 \text{ W/m}^2/100 \text{ lx}$ (Ground area: 6.27 m^2)

Škola_1kat_servisni prostor (el)_D109 /

1 Pieces

LED, industrial, body PC with aluminium cooler, diffuser translucent PC Article No.:

Luminous flux (Luminaire): 7438 lm

Luminous flux (Lamps): 7440 lm

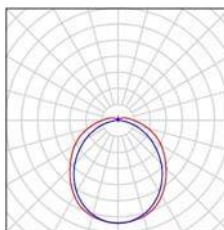
Luminaire Wattage: 53.0 W

Luminaire classification according to CIE: 94

CIE flux code: 45 74 92 94 100

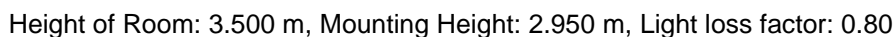
Fitting: 1 x (Correction Factor 1.000).

See our luminaire catalog for image of the luminaire.



an

Škola_1kat_hodnik_D101 /



Surface	ρ [%]	E_{av} [lx]	E_{min} [lx]	E_{max} [lx]	u_0
Workplane	/	261	115	345	0.441
Floor	20	261	112	345	0.427
Ceiling	70	72	37	103	0.516
Walls (4)	50	177	39	720	/

Illuminance Quotient (according to LG7): Walls / Working Plane: 0.675, Ceiling / Working Plane: 0.277.

No.	Pieces	Designation (Correction Factor)	□ (Luminaire) [lm]	□ (Lamps) [lm]	P [W]
1	3	(1.000)	6387	8058	65.0

Total: 19162 Total: 24174 195.0

Specific connected load: $7.52 \text{ W/m}^2 = 2.88 \text{ W/m}^2/100 \text{ lx}$ (Ground area: 25.94 m^2)

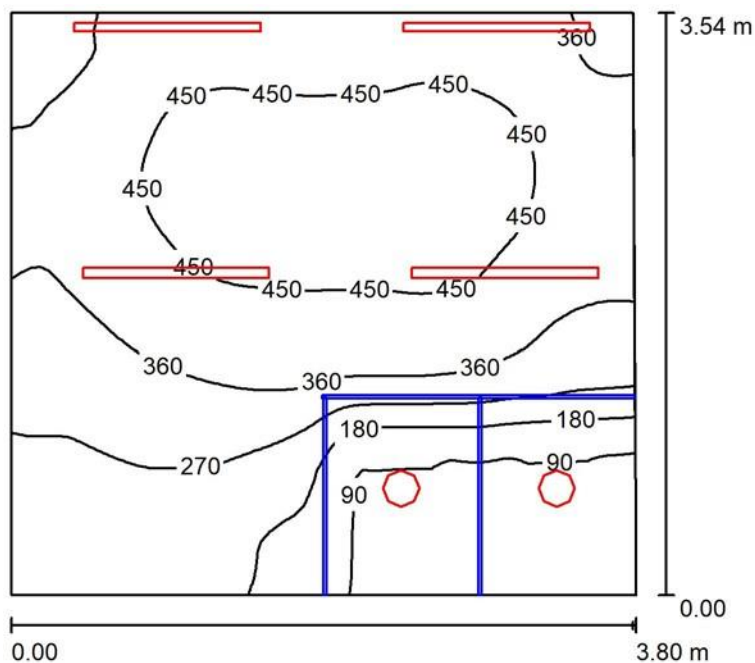
Škola_1kat_hodnik_D101 /

██████████ (Correction Factor 1.000).

Operator Nova-lux d.o.o.
 Telephone
 Fax e-
 Mail

Luminaire parts list

Škola_1kat_sanitarije_D110 /



Height of Room: 3.500 m, Light loss factor: 0.80

Values in Lux, Scale 1:46

Surface	\square [%]	E_{av} [lx]	E_{min} [lx]	E_{max} [lx]	$u0$
Workplane / 332 65 495	0.198	Floor 20 332 65 496	0.195	Ceiling 70 121 77 156	0.640
Walls (4) 50 227 28 1878					

Workplane:

Height: 0.000 m
 Grid: 64 x 64 Points
 Boundary Zone: 0.000 m

Illuminance Quotient (according to LG7): Walls / Working Plane: 0.677, Ceiling / Working Plane: 0.364.

Luminaire Parts List

No.	Pieces	Designation (Correction Factor)	\square (Luminaire) [lm]	\square (Lamps) [lm]	P [W]
1	2	3096 4644 28.0			
2	2	(1.000)	1138	1667	13.2
3	2	3375 4644 28.0			

Operator Nova-lux d.o.o.
Telephone
Fax e-
Mail

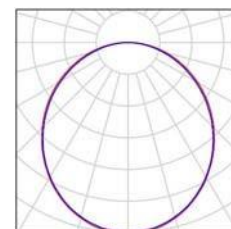
Summary

Total: 15216 Total: 21910 138.4

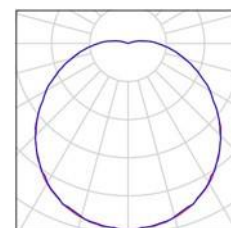
Specific connected load: $10.32 \text{ W/m}^2 = 3.11 \text{ W/m}^2/100 \text{ lx}$ (Ground area: 13.41 m^2)

Škola_1kat_sanitarije_D110 /

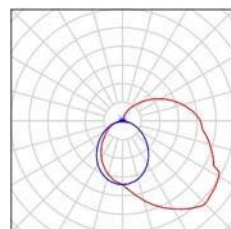
2 Pieces [redacted] our luminaire catalog
[redacted] an image of the Article No.: [redacted]
luminaire.
Luminous flux (Luminaire): 3096 lm
Luminous flux (Lamps): 4644 lm
Luminaire Wattage: 28.0 W
Luminaire classification according to CIE: 100
CIE flux code: 47 78 95 100 67
Fitting: [redacted] (Correction Factor 1.000).



2 Pieces [redacted] See our luminaire catalog
[redacted] for an image of the
luminaire.
Article No.: [redacted]
Luminous flux (Luminaire): 1138 lm
Luminous flux (Lamps): 1667 lm
Luminaire Wattage: 13.2 W
Luminaire classification according to CIE: 96
CIE flux code: 41 70 89 96 68
Fitting: 1 x LED (Correction Factor 1.000).



2 Pieces [redacted] See our luminaire catalog
[redacted] for an image of the
luminaire.
Article No.: [redacted]
Luminous flux (Luminaire): 3375 lm
Luminous flux (Lamps): 4644 lm
Luminaire Wattage: 28.0 W
Luminaire classification according to CIE: 79
CIE flux code: 36 65 86 79 73 Fitting: [redacted]
[redacted] (Correction Factor 1.000).





14.09.2020

Operator Nova-lux d.o.o.

Telephone

F

a

x

e

-

M

a

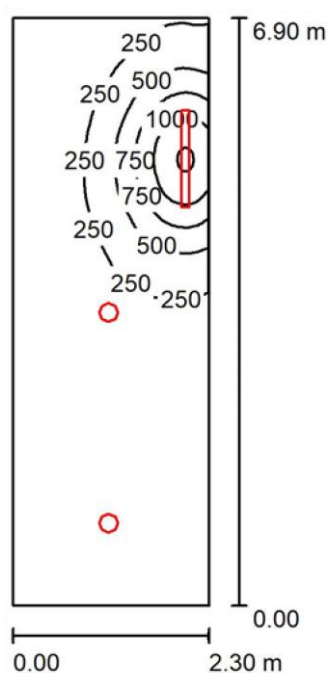
i

l

Luminaire parts list

Škola_1kat_kabinet hrvatski j_K101

/



Height of Room: 2.750 m, Light loss factor: 0.80

Values in Lux, Scale 1:80

Surface	ρ [%]	E_{av} [lx]	E_{min} [lx]	E_{max} [lx]	u0
Workplane	/	242	71	1277	0.294
Floor	20	191	66	509	0.346
Ceiling	70	55	34	166	0.622
Walls (4)	50	115	40	1719	/

Workplane:

Height: 0.800 m

Grid: 128 x 64 Points

Boundary Zone: 0.000 m

Illuminance Quotient (according to LG7): Walls / Working Plane: 0.503, Ceiling / Working Plane: 0.226.

Luminaire Parts List

14.09.2020

Operator Nova-lux d.o.o.
TelephoneF
a
x
e
-
M
a
i
l**Summary**

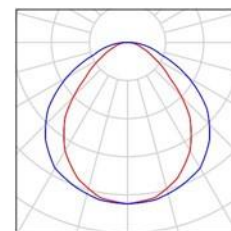
No.	Pieces	Designation (Correction Factor)	□ (Luminaire) [lm]	□ (Lamps) [lm]	P [W]
1	1	[REDACTED]	4725	4725	45.0
2	2	[REDACTED] (1.000)	1138	1667	13.2
Total: 7000			Total: 8059	Total: 8059	71.4

Specific connected load: $4.50 \text{ W/m}^2 = 1.86 \text{ W/m}^2/100 \text{ lx}$ (Ground area: 15.87 m^2)**Škola_1kat_kabinet hrvatski j_K101 /**

1 Pieces

[REDACTED]
[REDACTED]

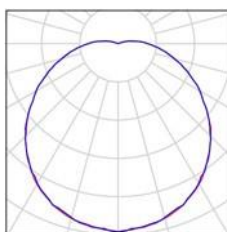
Article No.: [REDACTED]
 Luminous flux (Luminaire): 4725 lm
 Luminous flux (Lamps): 4725 lm
 Luminaire Wattage: 45.0 W
 Luminaire classification according to CIE: 100
 CIE flux code: 55 85 96 100 100 Fitting: 1 x
 (Correction Factor 1.000).

See our luminaire catalog
for an image of the
luminaire.

2 Pieces

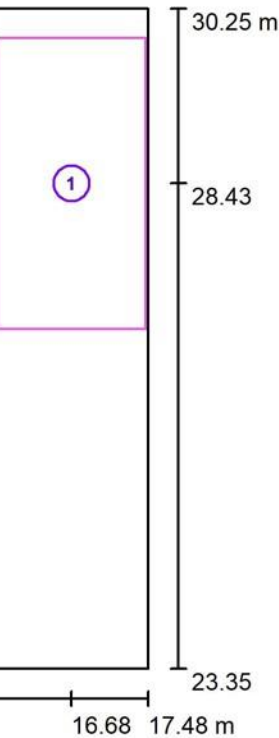
[REDACTED]
[REDACTED]
[REDACTED]

Article No. [REDACTED]
 Luminous flux (Luminaire): 1138 lm
 Luminous flux (Lamps): 1667 lm
 Luminaire Wattage: 13.2 W
 Luminaire classification according to CIE: 96
 CIE flux code: 41 70 89 96 68
 Fitting: 1 x LED
 (Correction
 1.000).

See our luminaire catalog for
image of the luminaire.Factor
an

Operator Nova-lux d.o.o.
Telephone
Fax e-
Mail

Škola_1kat_kabinet hrvatski j_K101 / Calculation surfaces (results overview)



Scale 1 : 79

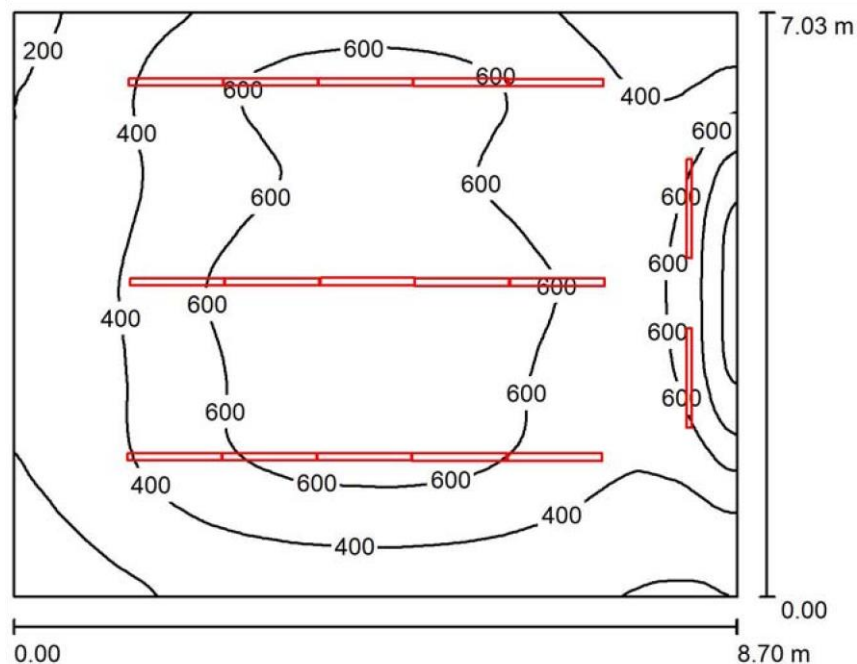
Calculation Surface List

Designation	Type	Grid	E_{av} [lx]	E_{min} [lx]	E_{max} [lx]	u_0	E_{min} / E_{max}
Radna ploha	perpendicular	32 x 64	506	127	1187	0.251	0.107



Operator Nova-lux d.o.o.
 Telephone
 Fax e-
 Mail

Škola_1kat_učionica / Summary



Height of Room: 3.500 m, Mounting Height: 2.950 m, Light loss factor: 0.80

Values in Lux, Scale 1:91

Surface	ρ [%]	E_{av} [lx]	E_{min} [lx]	E_{max} [lx]	$u0$
Workplane / 496 115 1074	0.232	Floor 20 443 159 781	0.360	Ceiling 70 93 56 125	0.603
Walls (4)	50 205 60 688				

Workplane:

Height: 0.800 m

Grid: 128 x 128 Points

Boundary Zone: 0.000 m

Illuminance Quotient (according to LG7): Walls / Working Plane: 0.394, Ceiling / Working Plane: 0.189.

Luminaire Parts List

No.	Pieces	Designation (Correction Factor)	ρ (Luminaire) [lm]	ρ (Lamps) [lm]	P [W] esse-ci
1	15	2391 2391 24.0			
2	2	(1.000)	3772	4099	32.0
Total: 43409					Total: 44063 424.0

Specific connected load: $6.94 \text{ W/m}^2 = 1.40 \text{ W/m}^2/100 \text{ lx}$ (Ground area: 61.11 m^2)

Operator Nova-lux d.o.o.
Telephone
Fax e-
Mail

Škola_1kat_učionica / Luminaire parts list

15 Pieces

[REDACTED]

[REDACTED]

Article No.: [REDACTED]

Luminous flux (Luminaire): 2391 lm

Luminous flux (Lamps): 2391 lm

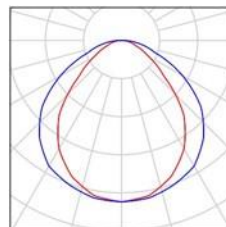
Luminaire Wattage: 24.0 W

Luminaire classification according to CIE: 100

CIE flux code: 55 85 96 100 100

Fitting: [REDACTED] (Correction Factor 1.000).

See our luminaire catalog
for an image of the
luminaire.



2 Pieces

[REDACTED]

[REDACTED]

[REDACTED]

Article No. [REDACTED]

Luminous flux (Luminaire): 3772 lm

Luminous flux (Lamps): 4099 lm

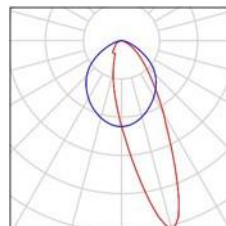
Luminaire Wattage: 32.0 W

Luminaire classification according to CIE: 100

CIE flux code: 65 91 99 100 92

Fitting: [REDACTED] (Correction Factor 1.000).

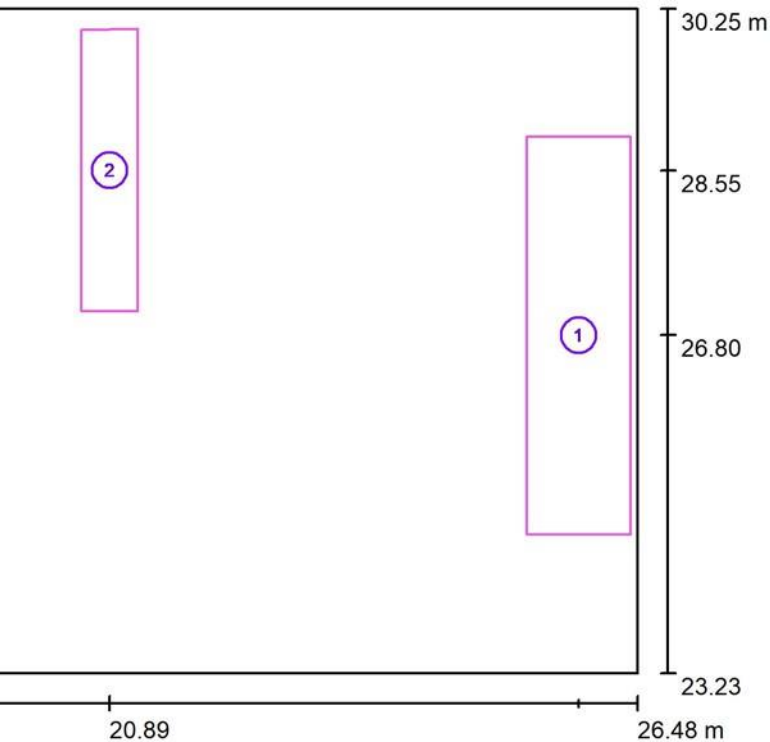
See our luminaire catalog
for an image of the
luminaire.





Operator Nova-lux d.o.o.
 Telephone
 Fax e-
 Mail

Škola_1kat_učionica / Calculation surfaces (results overview)



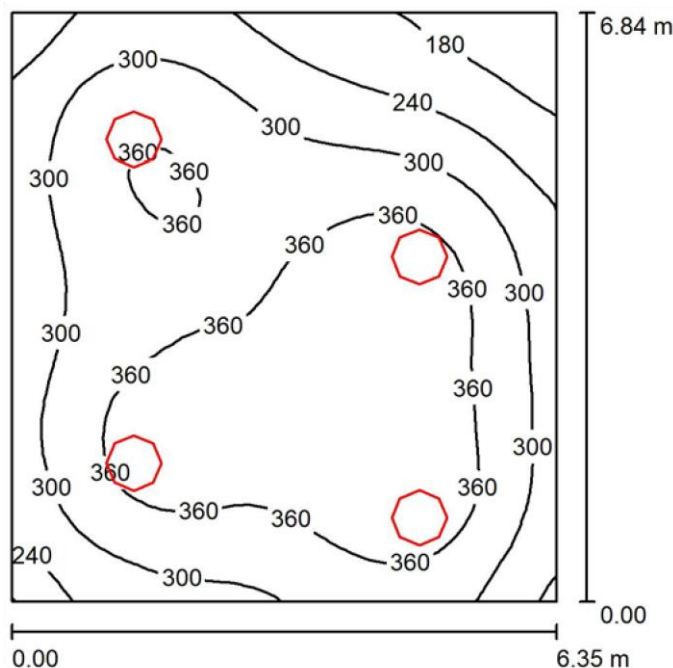
Scale 1 : 80

Surface List		Grid	E_{av} [lx]	E_{min} [lx]	E_{max} [lx]	u_0	E_{min} / E_{max}
tion	Type	16 x 64	646	411	1032	0.636	0.398
	perpendicular	4 x 16	611	535	686	0.876	0.780
loha		perpendicular					

Results		Quantity	Average [lx]	Min [lx]	Max [lx]	u_0	E_{min} / E_{max}
		2	636	411	1032	0.65	0.40

Operator Nova-lux d.o.o.
 Telephone
 Fax e-
 Mail

Škola_1kat_učenički klub_L128 / Summary



Height of Room: 3.500 m, Mounting Height: 3.848 m, Light loss factor: 0.80

Values in Lux, Scale 1:88

Surface	ρ [%]	E_{av} [lx]	E_{min} [lx]	E_{max} [lx]	u_0
Workplane	/	320	129	407	0.404
Floor	20	278	151	345	0.544
Ceiling	70	86	55	168	0.644
Walls (4)	50	204	79	662	/

Workplane:

Height: 0.800 m
 Grid: 32 x 32 Points
 Boundary Zone: 0.000 m

Illuminance Quotient (according to LG7): Walls / Working Plane: 0.679, Ceiling / Working Plane: 0.268.

Luminaire Parts List

No.	Pieces	Designation (Correction Factor)	Φ (Luminaire) [lm]	Φ (Lamps) [lm]	P [W]
1	4	[REDACTED] (1.000)	6387	8058	65.0
Total: 25550			Total: 32232	260.0	

Specific connected load: $5.99 \text{ W/m}^2 = 1.87 \text{ W/m}^2/100 \text{ lx}$ (Ground area: 43.40 m^2)

Operator Nova-lux d.o.o.
Telephone
Fax e-
Mail

Škola_1kat_učenički klub_L128 / Luminaire parts list

4 Pieces



See our luminaire catalog
for an image of the
luminaire.

Article No.: [Redacted]

Luminous flux (Luminaire): 6387 lm

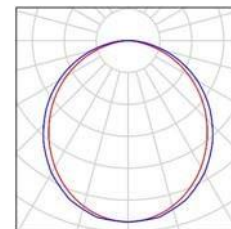
Luminous flux (Lamps): 8058 lm

Luminaire Wattage: 65.0 W

Luminaire classification according to CIE: 100

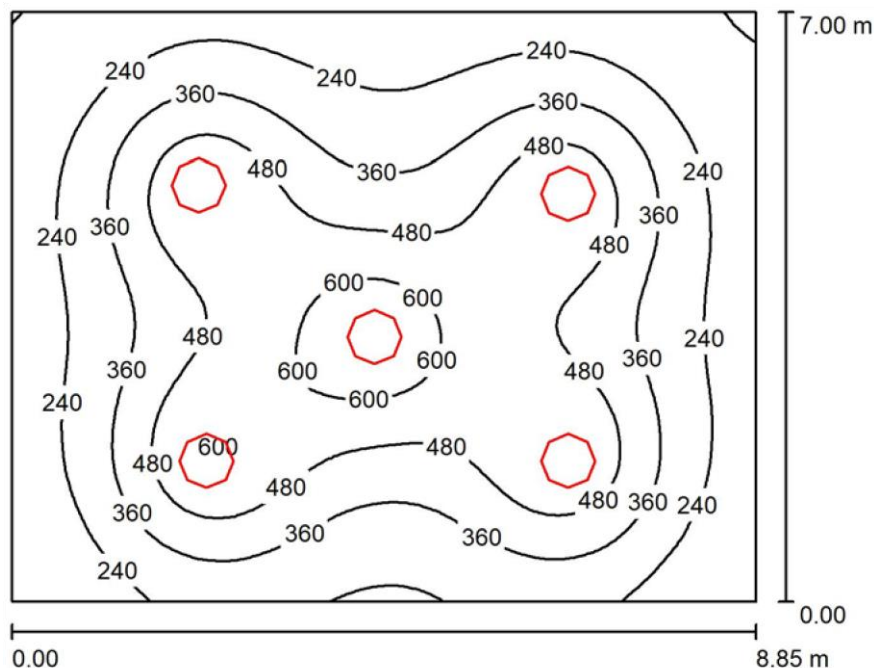
CIE flux code: 47 79 95 100 79

Fitting: [Redacted] (Correction
Factor 1.000).



Operator Nova-lux d.o.o.
 Telephone
 Fax e-
 Mail

Škola_1kat_knjižnica_Multim_prostor_K114 / Summary



Height of Room: 3.500 m, Mounting Height: 2.950 m, Light loss factor: 0.80

Values in Lux, Scale 1:90

Surface	ρ [%]	E_{av} [lx]	E_{min} [lx]	E_{max} [lx]	u_0
Workplane	/	370	115	685	0.311
Floor	20	327	144	508	0.439
Ceiling	70	66	45	79	0.687
Walls (4)	50	143	45	294	/

Workplane:

Height: 0.800 m
 Grid: 64 x 64 Points
 Boundary Zone: 0.000 m

Illuminance Quotient (according to LG7): Walls / Working Plane: 0.353, Ceiling / Working Plane: 0.179.

Luminaire Parts List

No.	Pieces	Designation (Correction Factor)	Φ (Luminaire) [lm]	Φ (Lamps) [lm]	P [W]
1	5	[REDACTED] (1.000)	6387	8058	65.0
Total: 31937			Total: 40290	325.0	

Specific connected load: $5.25 \text{ W/m}^2 = 1.42 \text{ W/m}^2/100 \text{ lx}$ (Ground area: 61.95 m^2)

Operator Nova-lux d.o.o.
Telephone
Fax e-
Mail

Škola_1kat_knjižnica_Multim_prostor_K114 / Luminaire parts list

5 Pieces



See our luminaire catalog
for an image of the
luminaire.

Article No.: [Redacted]

Luminous flux (Luminaire): 6387 lm

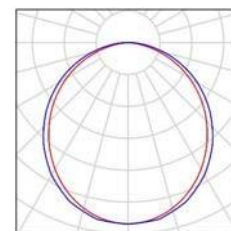
Luminous flux (Lamps): 8058 lm

Luminaire Wattage: 65.0 W

Luminaire classification according to CIE: 100

CIE flux code: 47 79 95 100 79

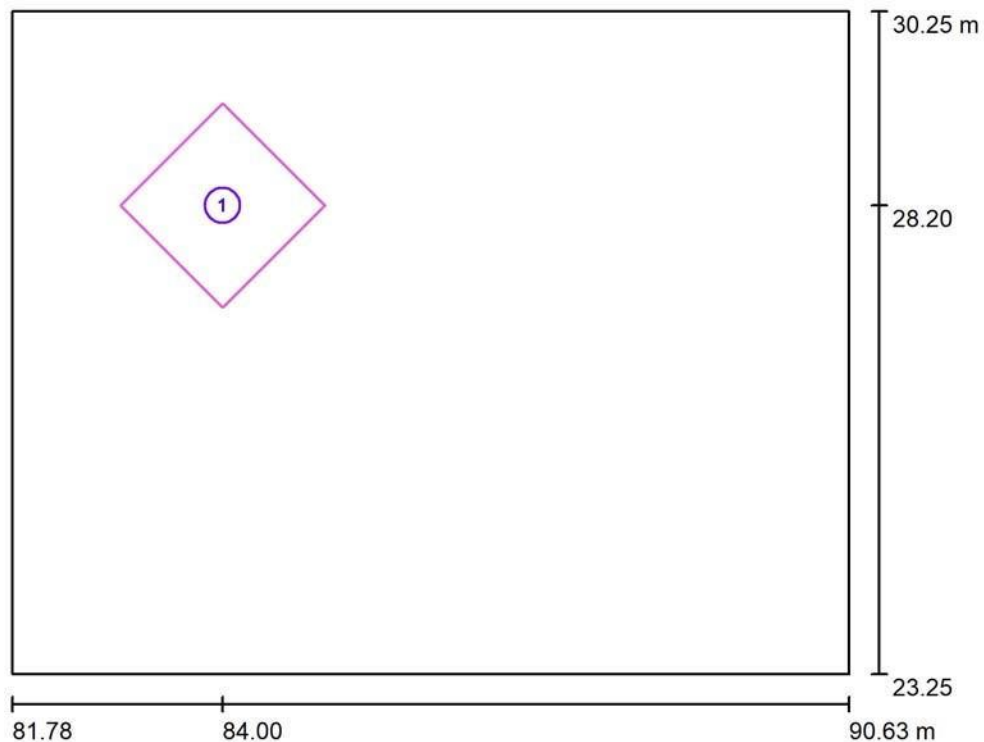
Fitting: [Redacted] (Correction
Factor 1.000).





Operator Nova-lux d.o.o.
 Telephone
 Fax e-
 Mail

Škola_1kat_knjižnica_Multim_prostor_K114 / Calculation surfaces (results overview)



Scale 1 : 80

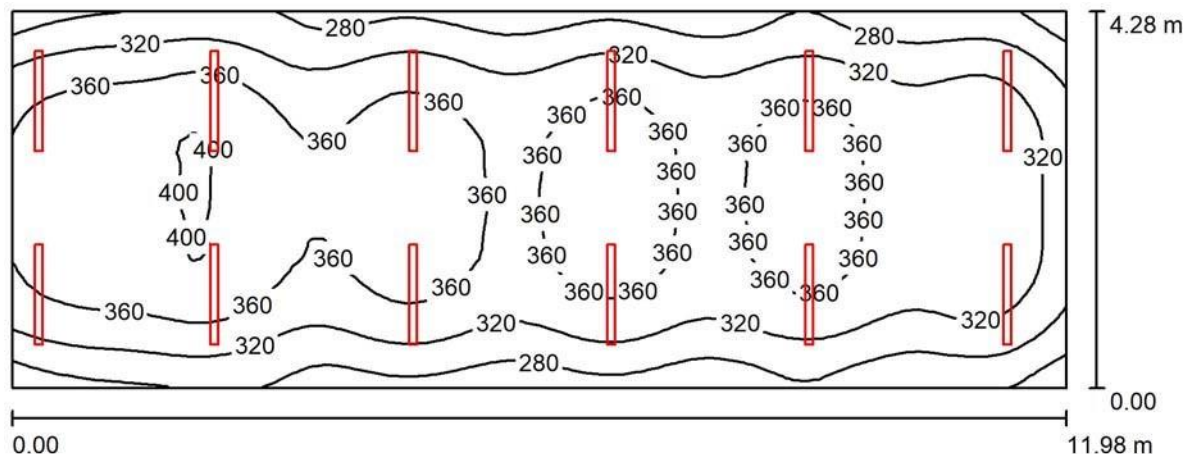
Calculation Surface List

No.	Designation	Type	Grid	E_{av} [lx]	E_{min} [lx]	E_{max} [lx]	u_0	E_{min} / E_{max}
1	Stol	perpendicular	8 x 8	500	387	565	0.773	0.685

Operator Nova-lux d.o.o.
 Telephone
 Fax e-
 Mail

Luminaire parts list

Škola_1kat_knjižnica_Prostor za knjiznu gradju_K116



Height of Room: 3.500 m, Mounting Height: 2.950 m, Light loss factor: 0.80

Values in Lux, Scale 1:86

Surface	ρ [%]	E_{av} [lx]	E_{min} [lx]	E_{max} [lx]	u_0
Workplane	/	339	211	406	0.623
Floor	20	295	196	345	0.666
Ceiling	70	72	54	89	0.753
Walls (4)	50	171	51	845	/

Workplane:

Height: 0.800 m
 Grid: 64 x 32 Points
 Boundary Zone: 0.000 m

Illuminance Quotient (according to LG7): Walls / Working Plane: 0.514, Ceiling / Working Plane: 0.211.

Luminaire Parts List

No.	Pieces	Designation (Correction Factor)	Φ (Luminaire) [lm]	Φ (Lamps) [lm]	P [W]
1	12		2391	2391	24.0
Total: 28692			Total: 28692	Total: 28692	288.0

Specific connected load: $5.62 \text{ W/m}^2 = 1.66 \text{ W/m}^2/100 \text{ lx}$ (Ground area: 51.24 m^2)



Operator Nova-lux d.o.o.
Telephone
Fax e-
Mail

Summary

Škola_1kat_knjižnica_Prostor za knjiznu gradju_K116 /

12 Pieces



Article No.: 

Luminous flux (Luminaire): 2391 lm

Luminous flux (Lamps): 2391 lm

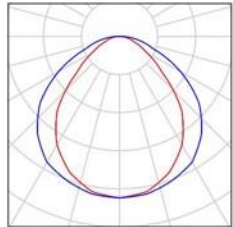
Luminaire Wattage: 24.0 W

Luminaire classification according to CIE: 100

CIE flux code: 55 85 96 100 100

Fitting:  (Correction Factor 1.000).

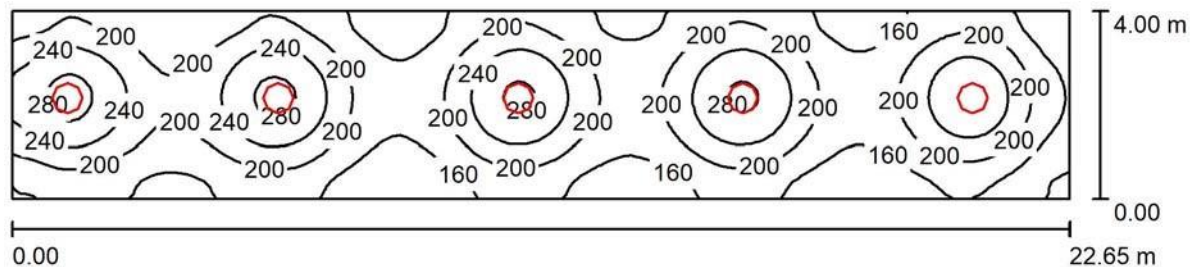
See our luminaire catalog
for an image of the
luminaire.



Operator Nova-lux d.o.o.
Telephone
Fax e-
Mail

Luminaire parts list

Škola_1kat_hodnik_K136 /



Height of Room: 3.500 m, Mounting Height: 2.950 m, Light loss factor: 0.80

Values in Lux, Scale 1:162

Surface	ρ [%]	E_{av} [lx]	E_{min} [lx]	E_{max} [lx]	$u0$
Workplane	/	199	113	297	0.568
Floor	20	199	110	296	0.553
Ceiling	70	43	32	58	0.740
Walls (4)	50	105	30	396	/

Workplane:

Height: 0.000 m
Grid: 128 x 32 Points
Boundary Zone: 0.000 m

Illuminance Quotient (according to LG7): Walls / Working Plane: 0.529, Ceiling / Working Plane: 0.218.

Luminaire Parts List

No.	Pieces	Designation (Correction Factor)	Φ (Luminaire) [lm]	Φ (Lamps) [lm]	P [W]
1	5	(1.000)	6387	8058	65.0
Total: 31937			Total: 40290	325.0	

Specific connected load: $3.59 \text{ W/m}^2 = 1.80 \text{ W/m}^2/100 \text{ lx}$ (Ground area: 90.59 m^2)

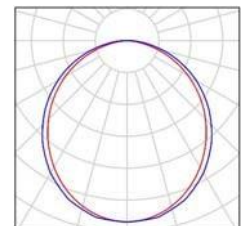
Škola_1kat_hodnik_K136 /

5 Pieces



See our luminaire catalog
for an image of the
luminaire.

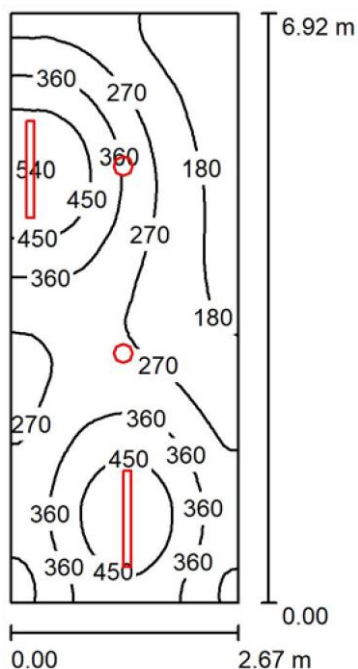
Article No.:
Luminous flux (Luminaire): 6387 lm
Luminous flux (Lamps): 8058 lm
Luminaire Wattage: 65.0 W
Luminaire classification according to CIE: 100
CIE flux code: 47 79 95 100 79 Fitting:
(Correction Factor 1.000).



Operator Nova-lux d.o.o.
 Telephone
 Fax e-
 Mail

Summary

Škola_2kat_kabinet bio/kem_K220
 /



Height of Room: 2.750 m, Light loss factor: 0.80

Values in Lux, Scale 1:80

Surface	ρ [%]	E_{av} [lx]	E_{min} [lx]	E_{max} [lx]	u0
Workplane	/	313	106	545	0.340
Floor	20	314	108	545	0.346
Ceiling	70	75	49	205	0.650
Walls (4)	50	163	54	2191	

Workplane:

Height: 0.000 m
 Grid: 32 x 64 Points
 Boundary Zone: 0.000 m

Illuminance Quotient (according to LG7): Walls / Working Plane: 0.525, Ceiling / Working Plane: 0.238.

Luminaire Parts List

No.	Pieces	Designation (Correction Factor)	Φ (Luminaire) [lm]	Φ (Lamps) [lm]	P [W]
1	2		4725	4725	45.0

Operator Nova-lux d.o.o.
 Telephone
 Fax e-
 Mail

Luminaire parts list

2	2	[REDACTED]	1138	1667	13.2
		(1.000)			

Total: 11725 Total: 12784 116.4

Specific connected load: $6.28 \text{ W/m}^2 = 2.00 \text{ W/m}^2/100 \text{ lx}$ (Ground area: 18.52 m^2)

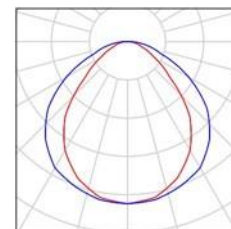
Škola_2kat_kabinet bio/kem_K220 /

2 Pieces

[REDACTED]
 [REDACTED]

Article No.: [REDACTED]
 Luminous flux (Luminaire): 4725 lm
 Luminous flux (Lamps): 4725 lm
 Luminaire Wattage: 45.0 W
 Luminaire classification according to CIE: 100
 CIE flux code: 55 85 96 100 100 Fitting: [REDACTED]
 (Correction Factor 1.000).

See our luminaire catalog
 for an image of the
 luminaire.

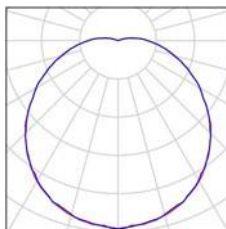


2 Pieces

[REDACTED]
 [REDACTED]
 [REDACTED]

Article No.: [REDACTED]
 Luminous flux (Luminaire): 1138 lm
 Luminous flux (Lamps): 1667 lm
 Luminaire Wattage: 13.2 W
 Luminaire classification according to CIE: 96
 CIE flux code: 41 70 89 96 68
 Fitting: 1 x LED
 (Correction 1.000).

See our luminaire catalog for
 image of the luminaire.

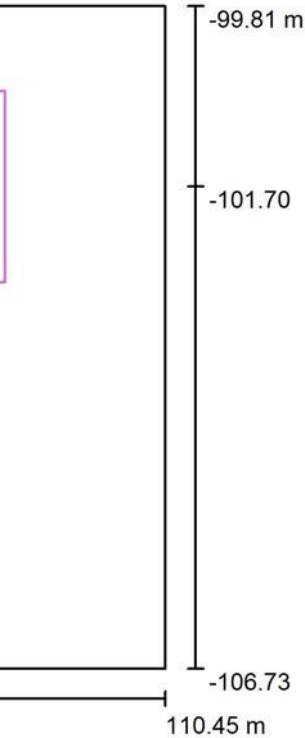


Factor
 an

14.09.2020

Operator Nova-lux d.o.o.
 Telephone
 Fax e-
 Mail

Škola_2kat_kabinet bio/kem_K220 / Calculation surfaces (results overview)



Scale 1 : 79

Calculation Surface List

Designation	Type	Grid	E _{av} [lx]	E _{min} [lx]	E _{max} [lx]	u0	E _{min} / E _{max}
Radna ploha	perpendicular	16 x 32	824	385	1237	0.467	0.311

